



Rodol Mall
California●





Urban Chic, Redefined.

Nestled in the bustling heart of Eastleigh

**Urban Chic,
Redefined.**





Urban Chic, **Redefined**

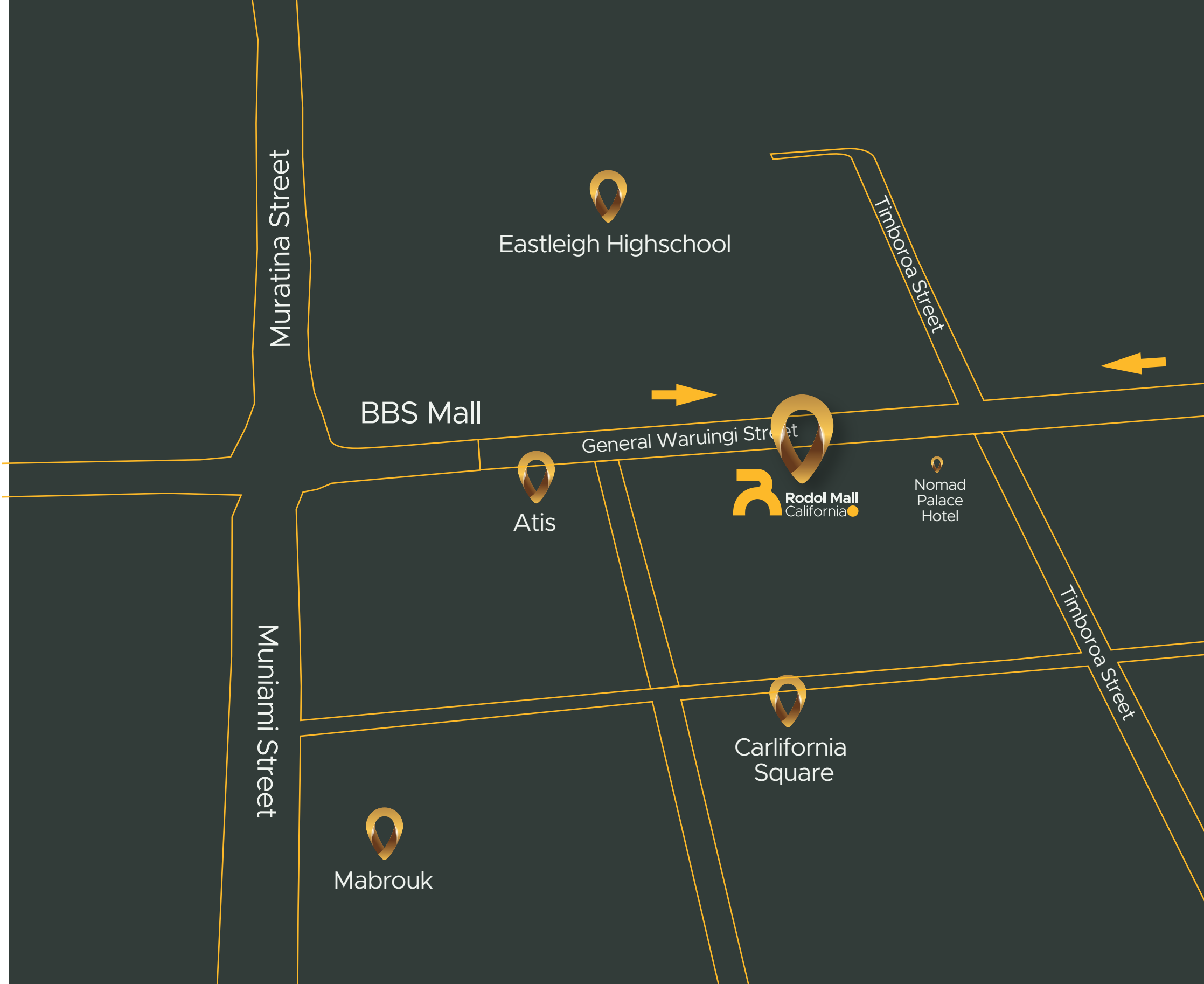
Nestled in the bustling heart of Eastleigh, Rodol MALL Carlifonia stands as a beacon of architectural brilliance and modern luxury.

This 21-story masterpiece is not merely a building but a visionary creation, designed to elevate your lifestyle and redefine urban living.





A Symphony of **Business** and Leisure



Muratina Street

Eastleigh Highschool

Timbora Street

BBS Mall

General Waruingi Street

Atis

Rodol Mall
California

Nomad
Palace
Hotel

Timbora Street

Muniami Street

Carlifornia
Square

Mabrouk

Yare Plaza

Yare Towers

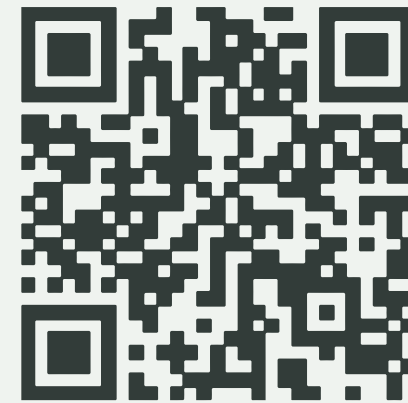
General Waruingi Street

2nd Avenue Eastleigh

Madina
Mall

Where Everything Connects

At the Heart of Eastleigh



Scan to find me!

The Commercial Hub

Imagine walking into a world where every convenience is at your fingertips. The lower floors of Rodol MALL Carlifonia are a vibrant commercial hub, meticulously crafted to cater to your every need.

Explore a vibrant mix of shops, state-of-the-art offices, diverse restaurants, and a serene mosque. Stay fit at our modern gym, enjoy top-notch grooming services, and utilize our versatile conference hall. Rodol MALL Carlifonia offers everything you need for business, leisure, and well-being, all in one stunning location.

A Symphony
of **Business**
and Leisure







Urban Chic, **Redefined**

Ascending beyond the commercial spaces, Rodol MALL Carlifonia transforms into a sanctuary of luxury and comfort. Our 1 and 2 bedroom suites offer an unparalleled living experience, combining hotel-like amenities with the comfort of home.

Floorplans



Cozy 1 Bedroom - 57 SQM

Investor Friendly



Floorplan

**Spacious 2 Bedroom
Master ensuite**



85 SQM
Typology A

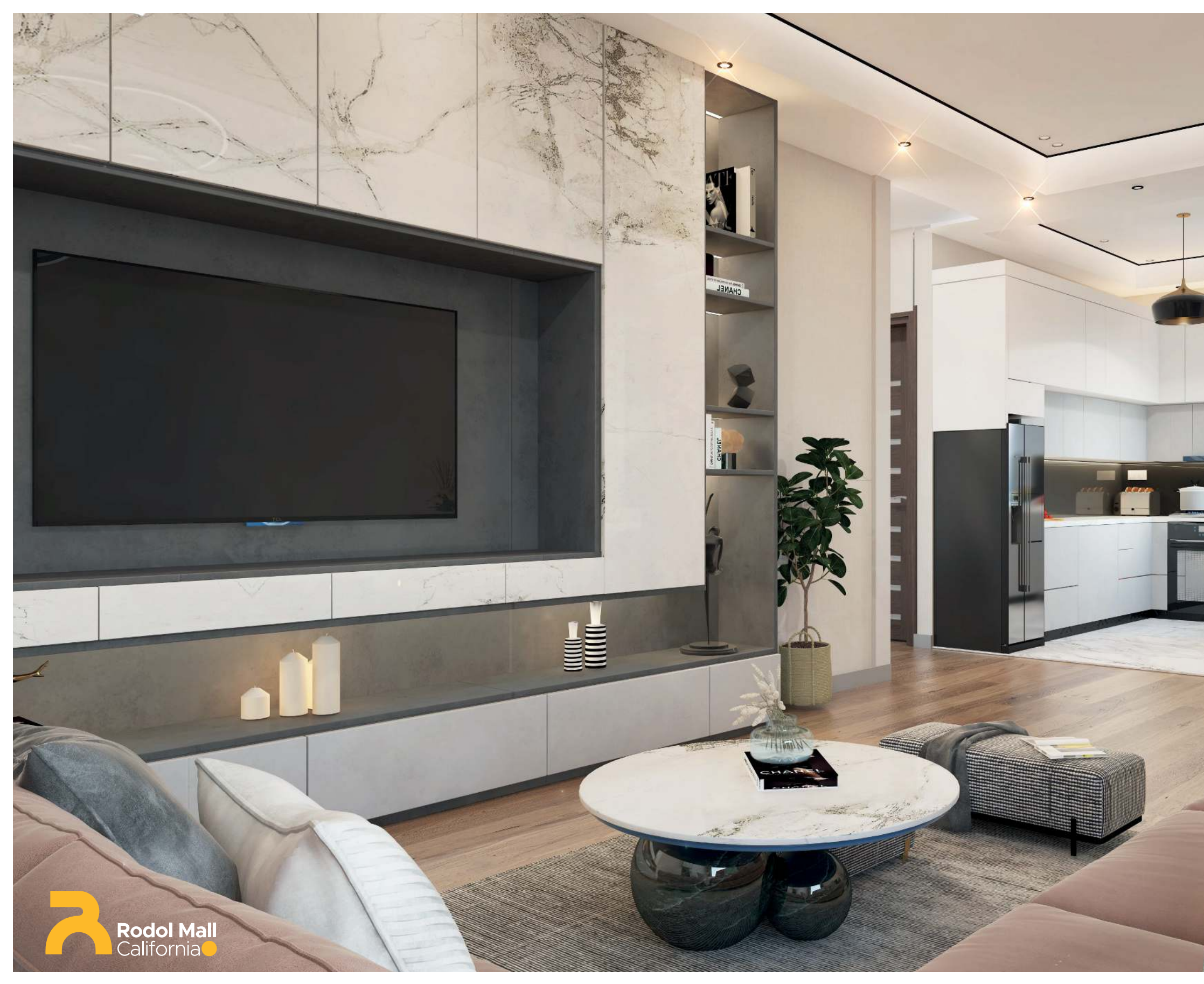
Floorplan

**Spacious 2 Bedroom
Master ensuite**



85 SQM

Typology B





**Embrace the
Future of Living**

Floorplan

Spacious 2 Bedroom
Master ensuite



85 SQM
Typology C

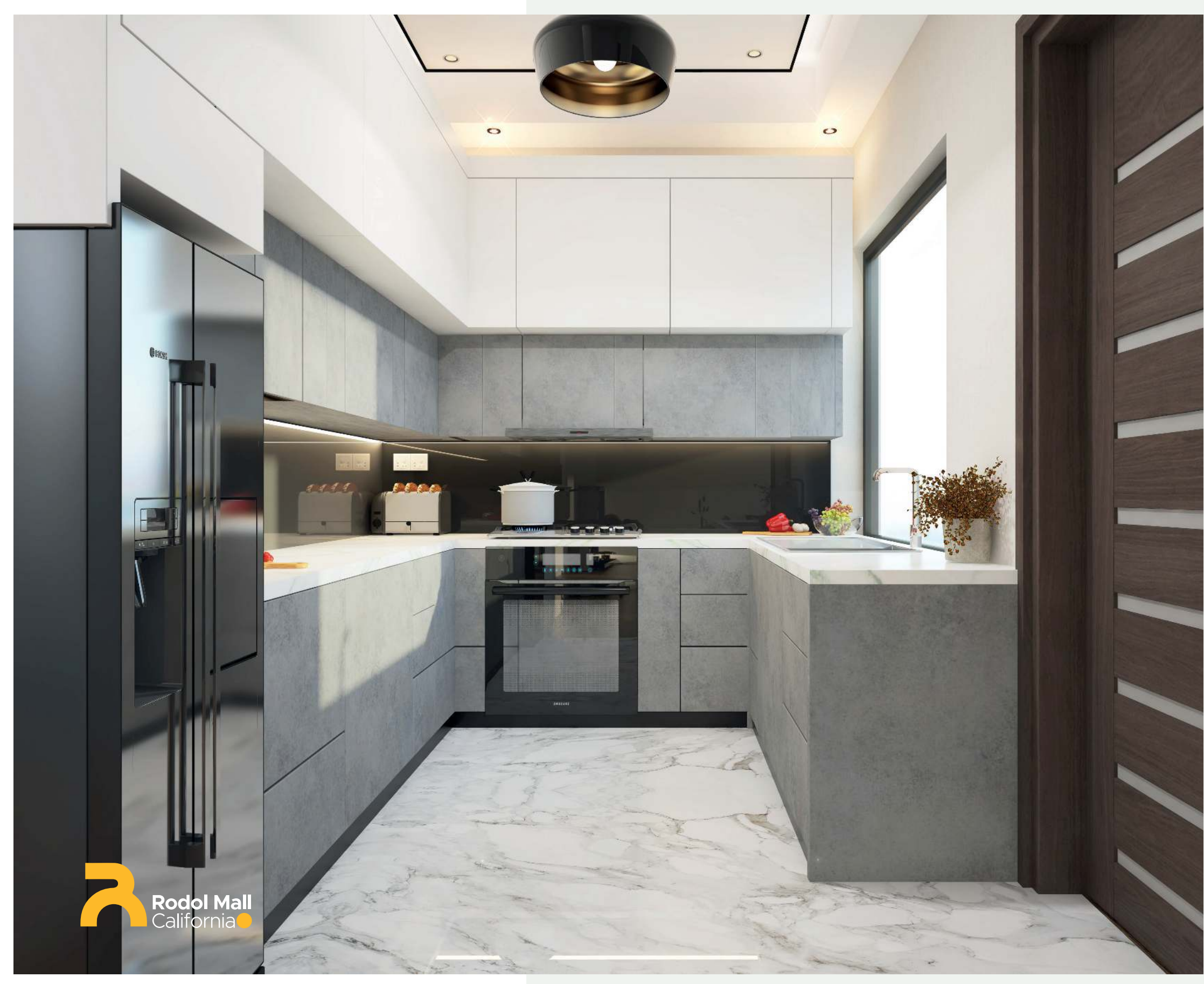
Floorplan

Spacious 2 Bedroom
Master ensuite



85 SQM

Typology C



Spacious Elegance: Each suite is a haven of space and light, meticulously designed to provide an atmosphere of tranquility and sophistication. With high-quality finishes and thoughtful layouts, every detail speaks of excellence.

Innovative Living: Embrace the concept of hotel living, where every service is designed to cater to your needs. From concierge services to in-suite dining, experience a lifestyle where convenience and luxury blend seamlessly.







Capitalize

WHEELS OF TIME

FITNESS CENTRE

OFFICE SPACE Rental

WHEELS OF TIME

Sandwiches DUBWAY Salads

Sandwiches DUBWAY Salads

Order here Pay Here

Order here Pay Here

THE ROOKS

HOSE

WHEELS OF TIME

WHEELS OF TIME

WHEELS OF TIME

Amenities

Rodol MALL Carlifonia offers everything you need for business, leisure, and well-being, all in one stunning location.

- Retail Shops and Convenience Stores
- State-of-the-Art Offices
- Diverse Restaurants
- Serene Mosque for Both Genders
- Modern Gym and Fitness Center
- Professional Barber Shops
- Versatile Conference Hall



0742 222 221

www.naicomhomes.com

California Square, Muratina Rd Naicom Homes Ltd