

PROJECT BY  
**NAHL**  
NAICOM HOMES LIMITED



# RODOL TOWERS

**6 bedroom  
Triplex penthouse + DSQ**

**5 bedroom  
duplex + DSQ**

**4 bedroom  
+ DSQ**

**2 BEDROOM  
+ DSQ**





PROJECT BY



# RODOL TOWERS

6 BEDROOM TRIPLEX PENTHOUSE + DSQ  
5 BEDROOM DUPLEX + DSQ  
2 BEDROOM + DSQ  
2 BEDROOM  
1 BEDROOM

*These luxurious triplex penthouses offer spectacular views and high-end finishes throughout.*

*The expansive living space is perfect for entertaining guests, while the gourmet kitchens and spacious bedrooms offer added comfort.*

*The standout feature is the dedicated servants' quarters, providing personalized service.*

*These residences are the epitome of opulence and sophistication, ideal for those seeking the ultimate cosmopolitan lifestyle.*





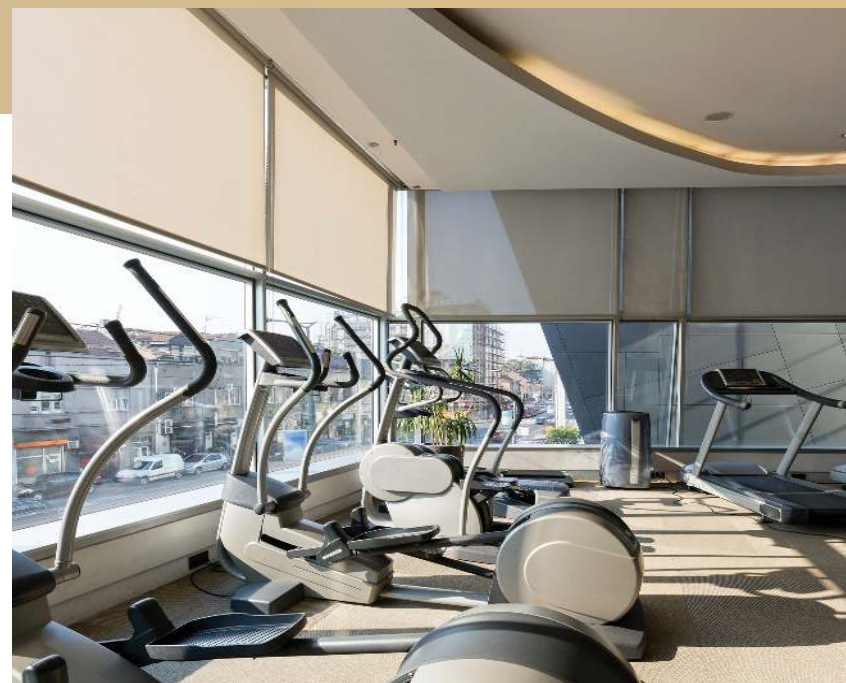
# FEATURES



- Offices
- 24/7 Security
- Restaurant
- Shops

- Lobby Lounge & Reception
- Ample & Secure Parking
- Modern High Speed Lift
- Kids Play Area
- Fully Equipped gyms on all towers

- Intercom system
- Full Power Back-up Generator
- Borehole
- Solar panels water heater
- Swimming Pool on Tower A



**3 TOWERS  
21 FLOORS EACH**

**0% INTEREST**

**3 YEARS PAYMENT**

[www.naicomhomes.com](http://www.naicomhomes.com)








PROJECT BY



3RD PARKLANDS AVENUE,  
OPPOSITE THE MOSQUE

# RODOL TOWERS

-  6 BEDROOM TRIPLEX PENTHOUSE + DSQ
-  5 BEDROOM DUPLEX + DSQ
-  2 BEDROOM + DSQ
-  2 BEDROOM
-  1 BEDROOM



[www.naicomhomes.com](http://www.naicomhomes.com)

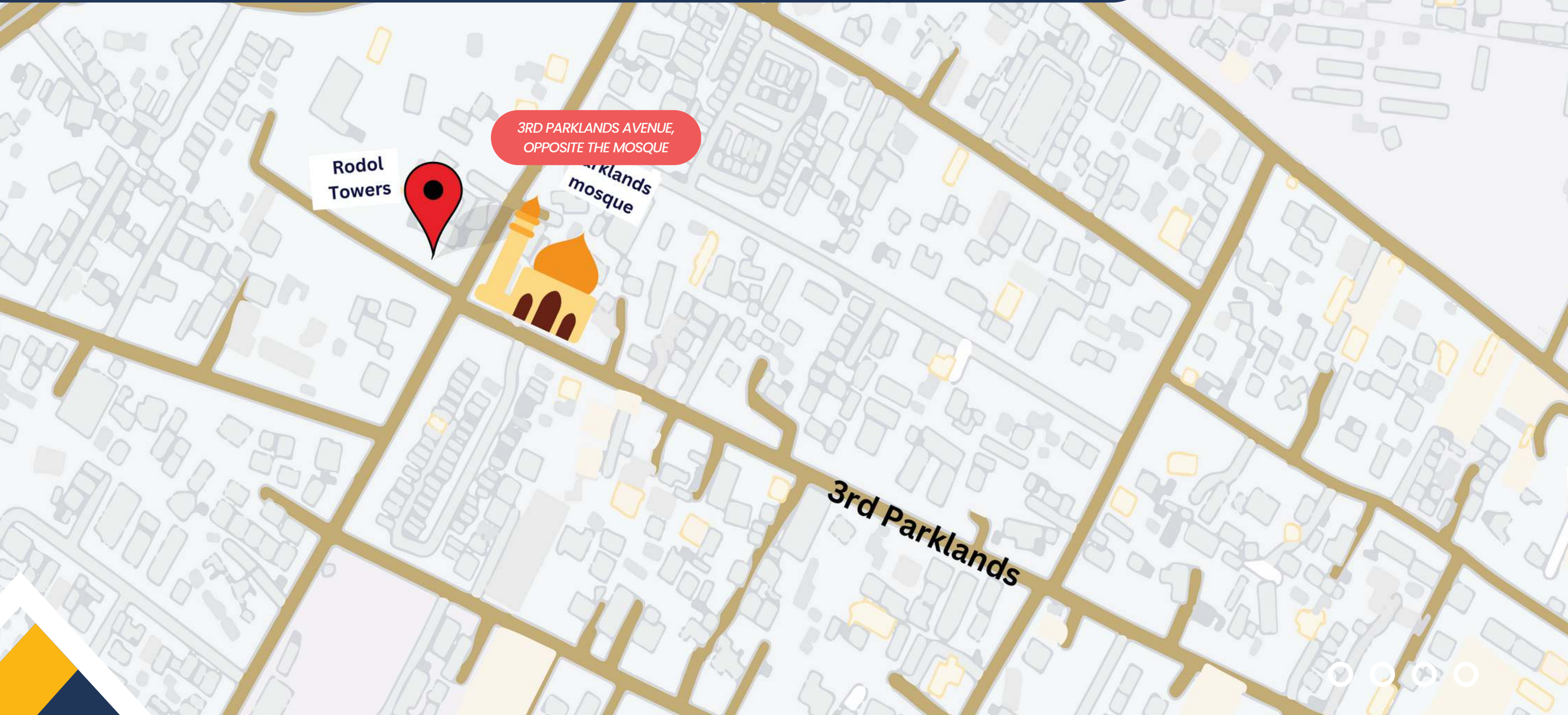
+254 742 222221





# 3RD PARKLANDS AVENUE, OPPOSITE THE MOSQUE

LOCATION



<http://www.naicomhomes.com>

+254 742 22221





# LIVING ROOM



[www.naicomhomes.com](http://www.naicomhomes.com)

+254 742 22221



# OPEN KITCHEN & PANTRY



[www.naicomhomes.com](http://www.naicomhomes.com)

+254 742 22221





# MASTER BEDROOM - ENSUITE



[www.naicomhomes.com](http://www.naicomhomes.com)

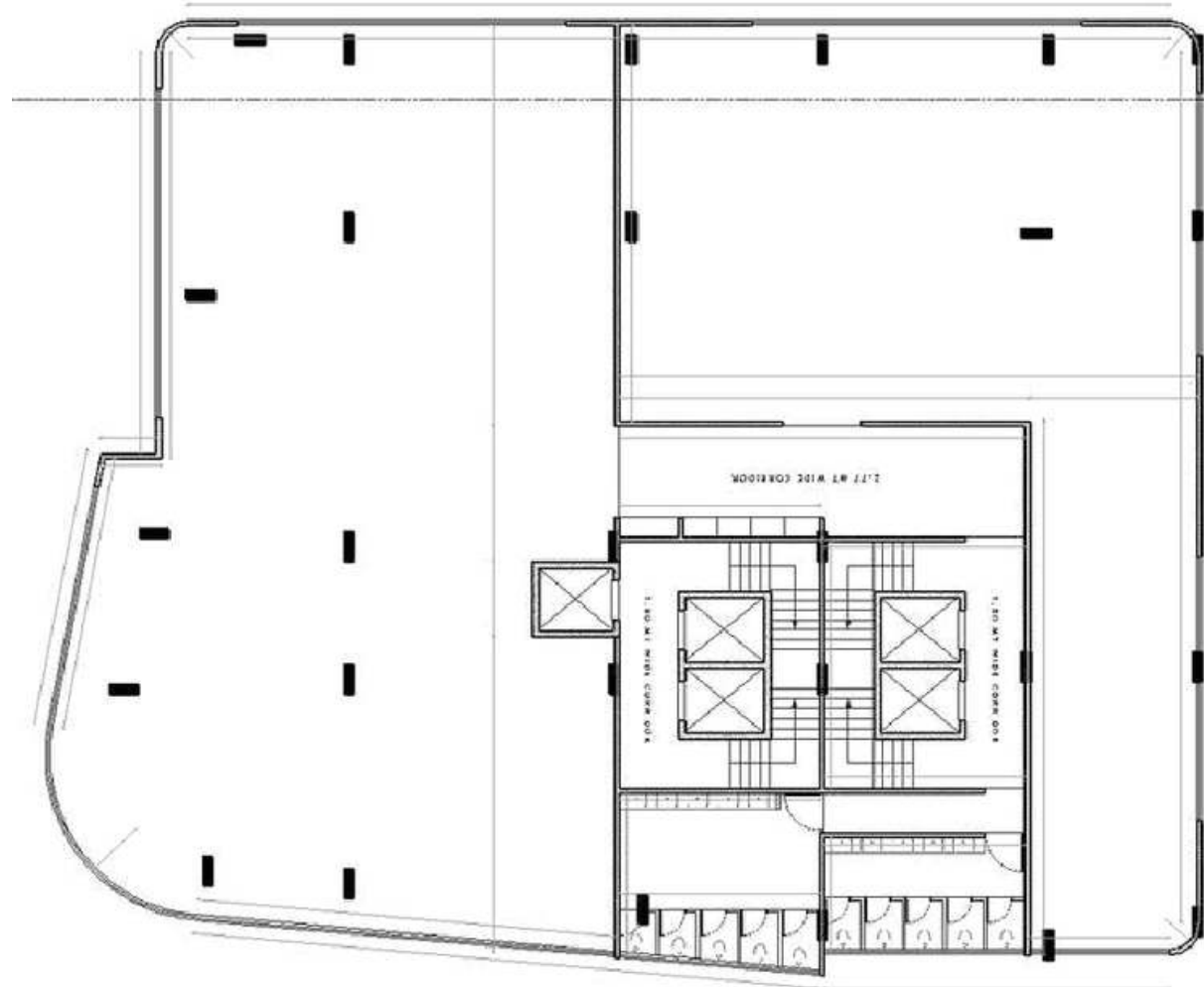
+254 742 22221



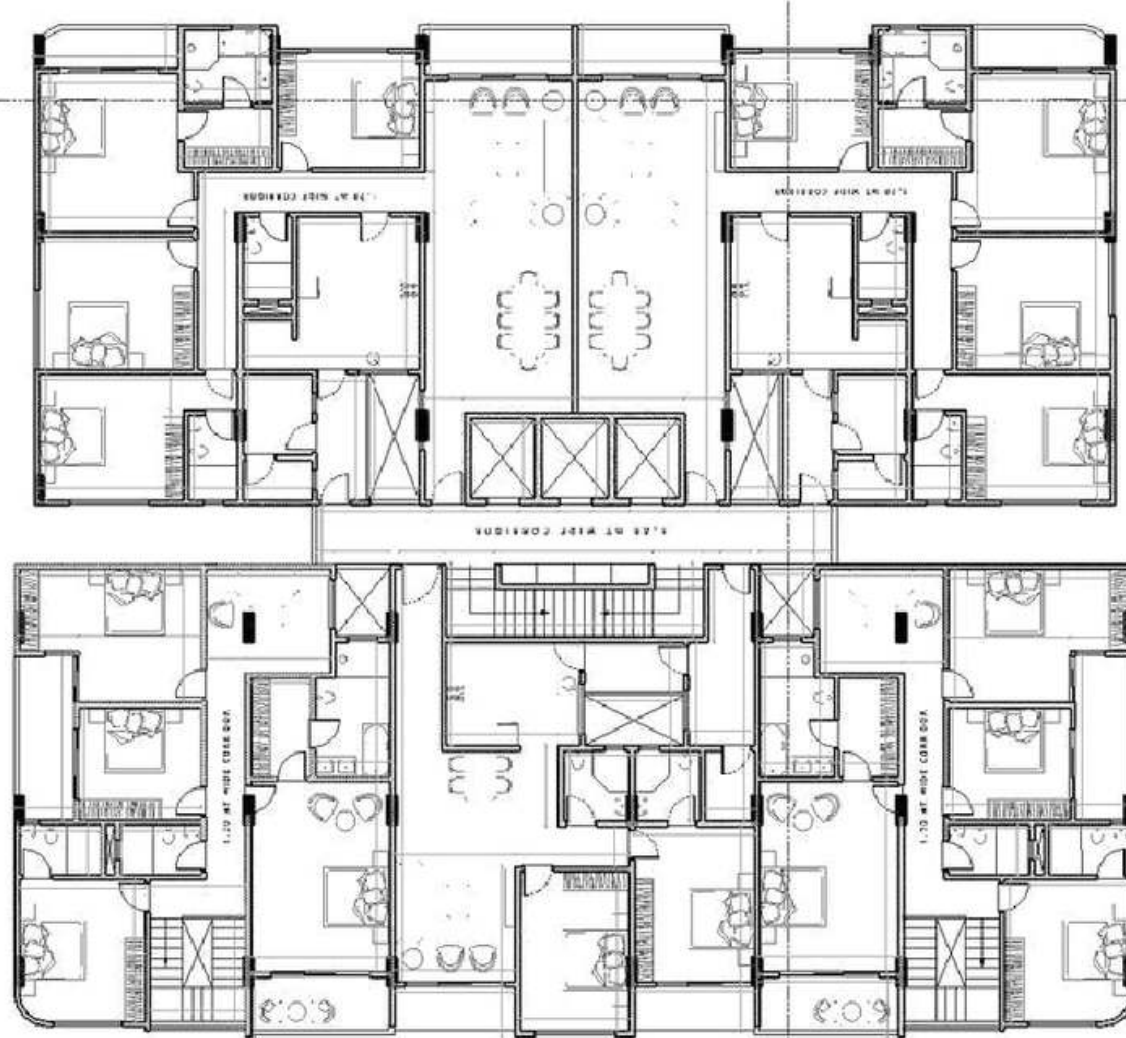


# TOWERS

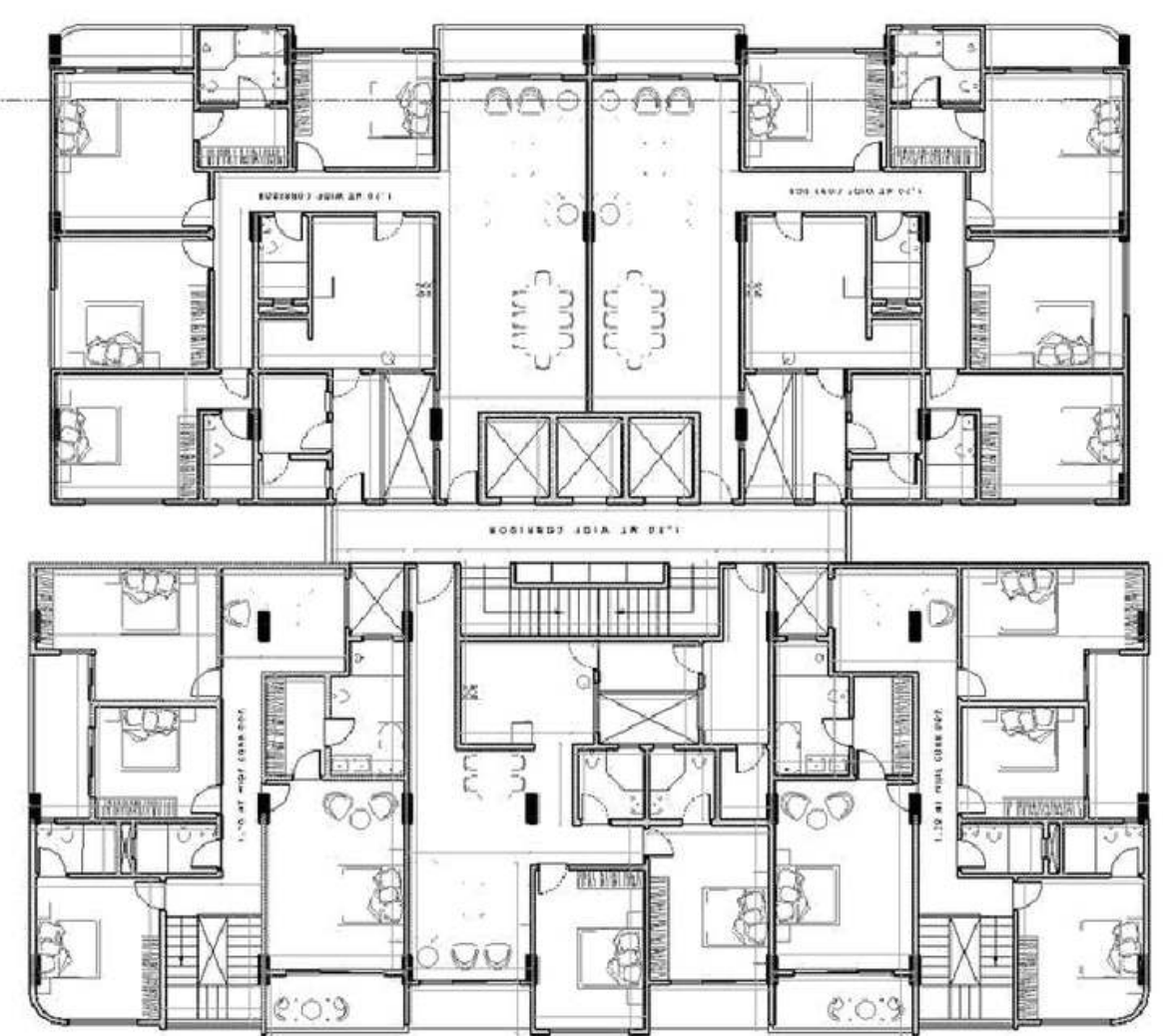
## A



## B



## C

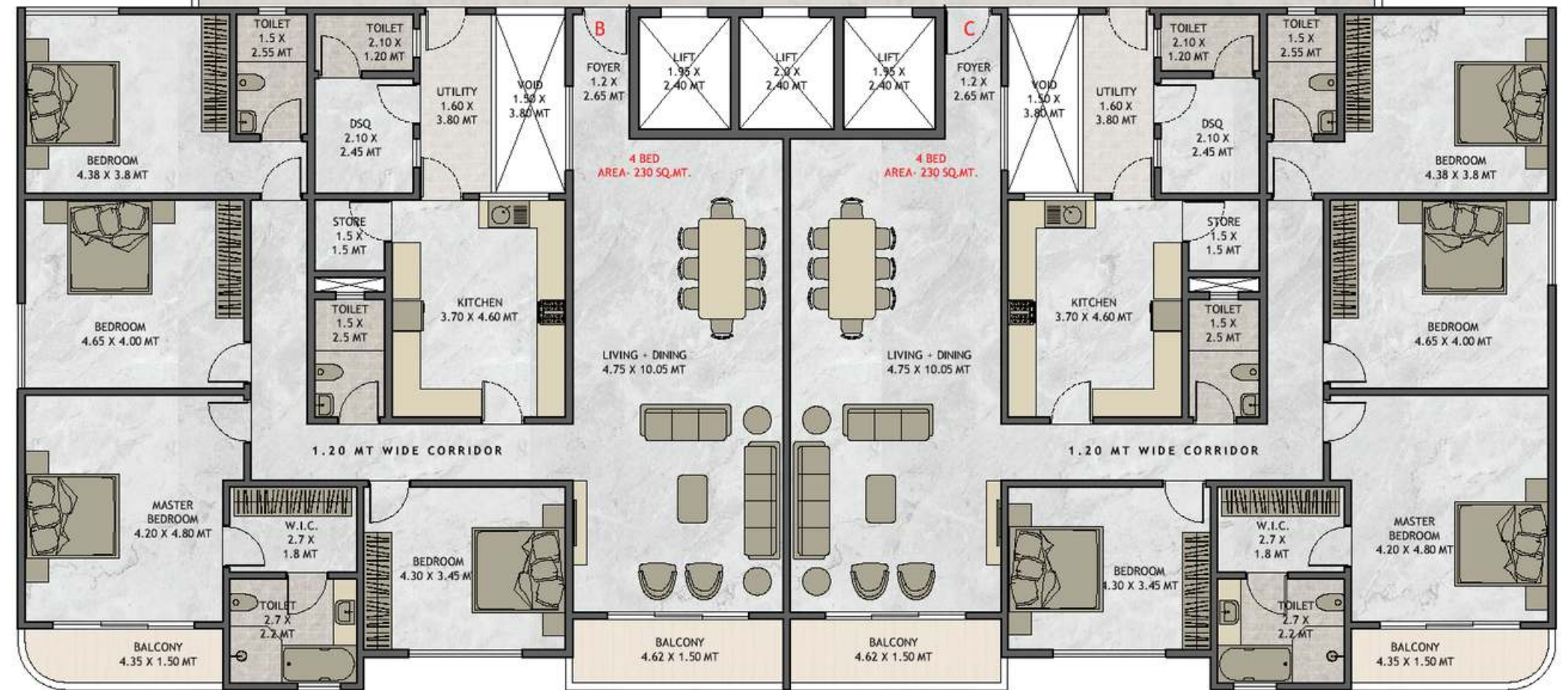




# TOWER B/C LOWER FLOOR PLAN

## NOTES

1. This floor consists of 5 units
  - a. 5 Bedroom + DSQ Duplex (320SQ.MT) each (2 units)
  - b. 4 Bedroom + DSQ Duplex (230SQ.MT) each (2 units)
  - c. 2 Bedroom + DSQ Duplex (140SQ.MT) each (1 unit)
2. The lower floor of each duplex apartment have the below numbering sequence **1,3,5,7,9,11,13,15,17**

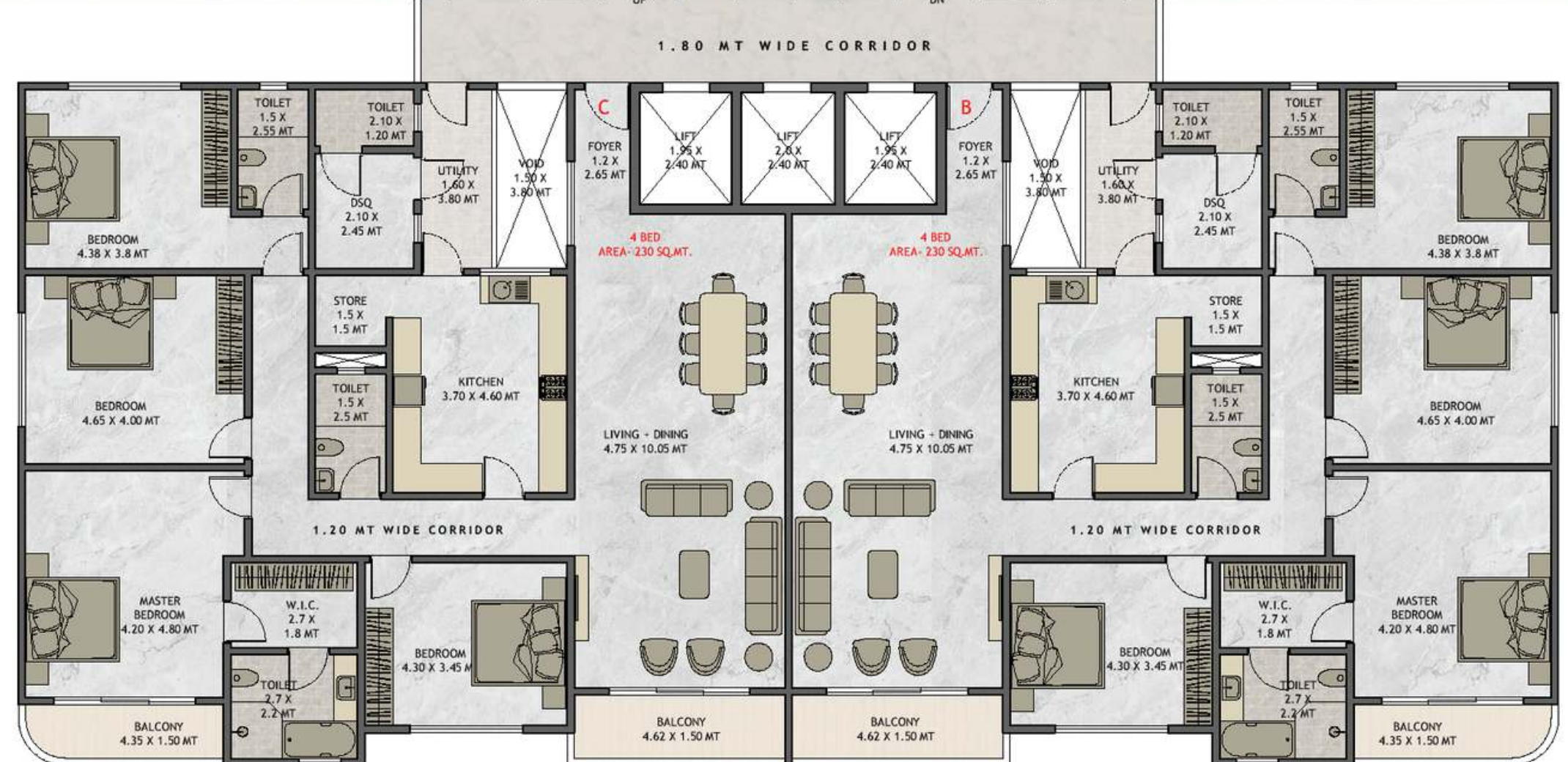




# TOWER B/C UPPER FLOOR PLAN

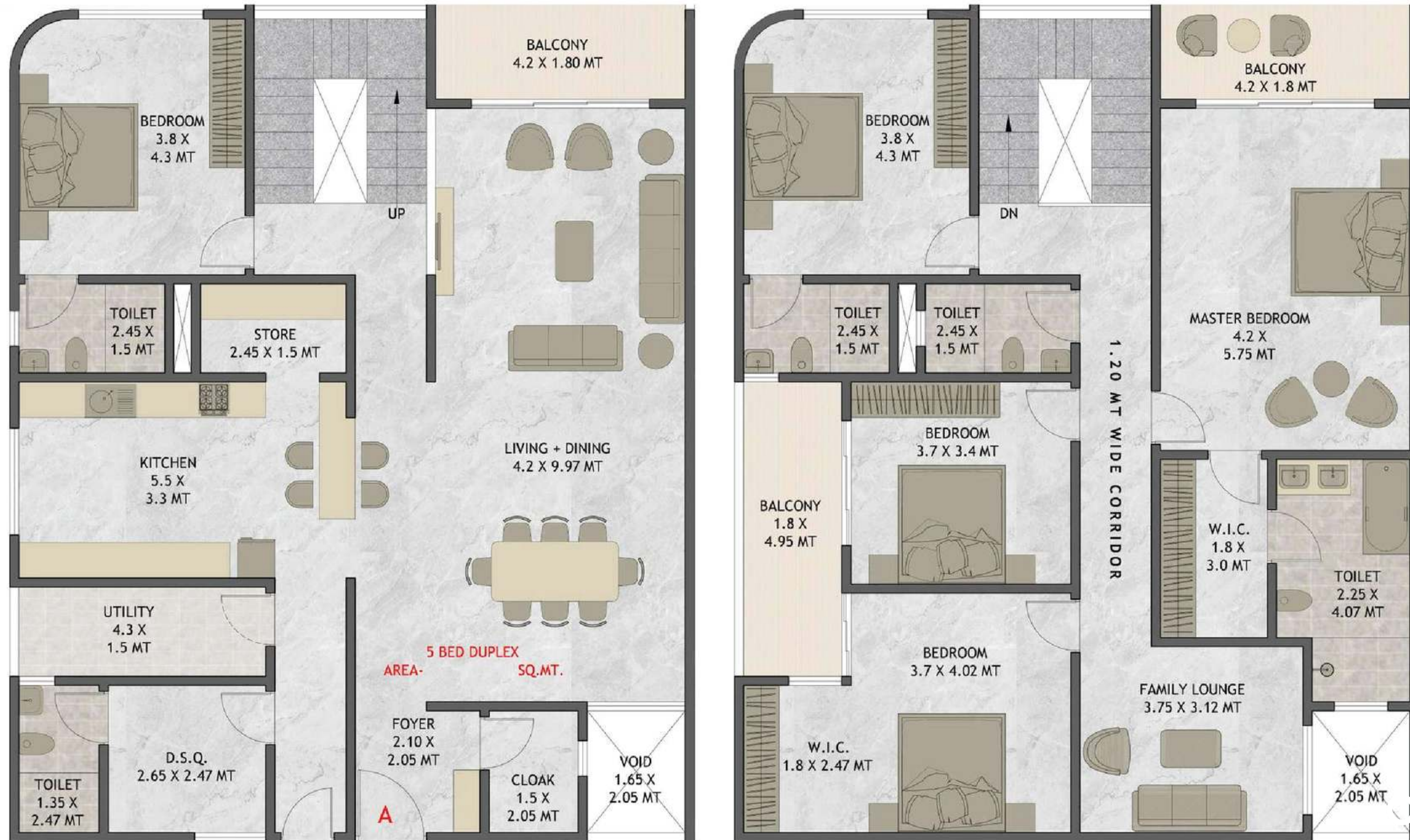
## NOTES

- This floor consists of 5 units
  - 5 Bedroom + DSQ Duplex (320SQ.MT) each (2units)
  - 4 Bedroom + DSQ Duplex (230SQ.MT) each (2 units)
  - 2 Bedroom + DSQ Duplex (140SQ.MT) each (1 unit)
- The lower floor of each duplex apartment have the below numbering sequence **2,4,6,8,10,12,14,16,18**



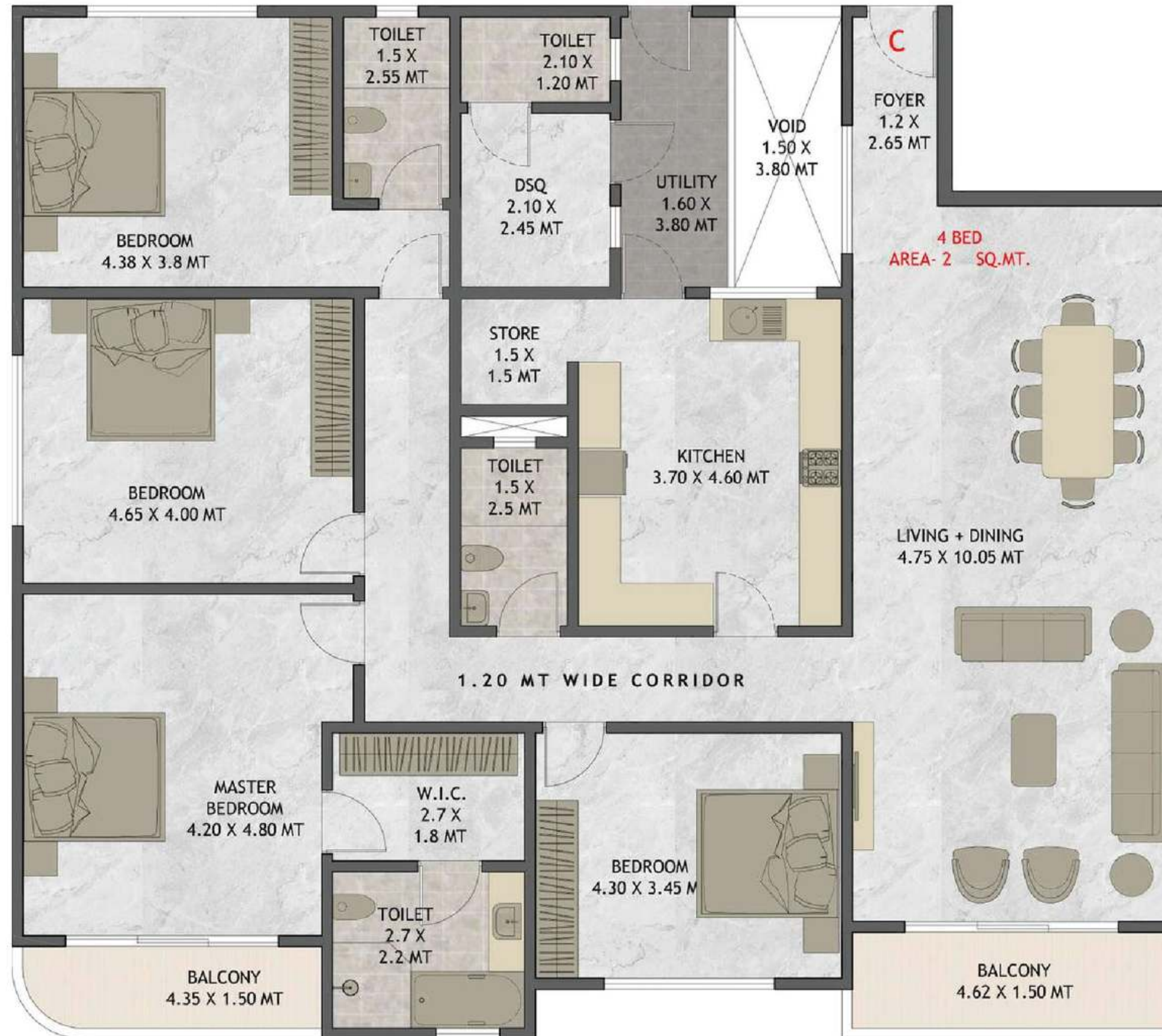


# TOWER B & C - 5 BEDROOM DUPLEX (LOWER & UPPER) - 320SQM



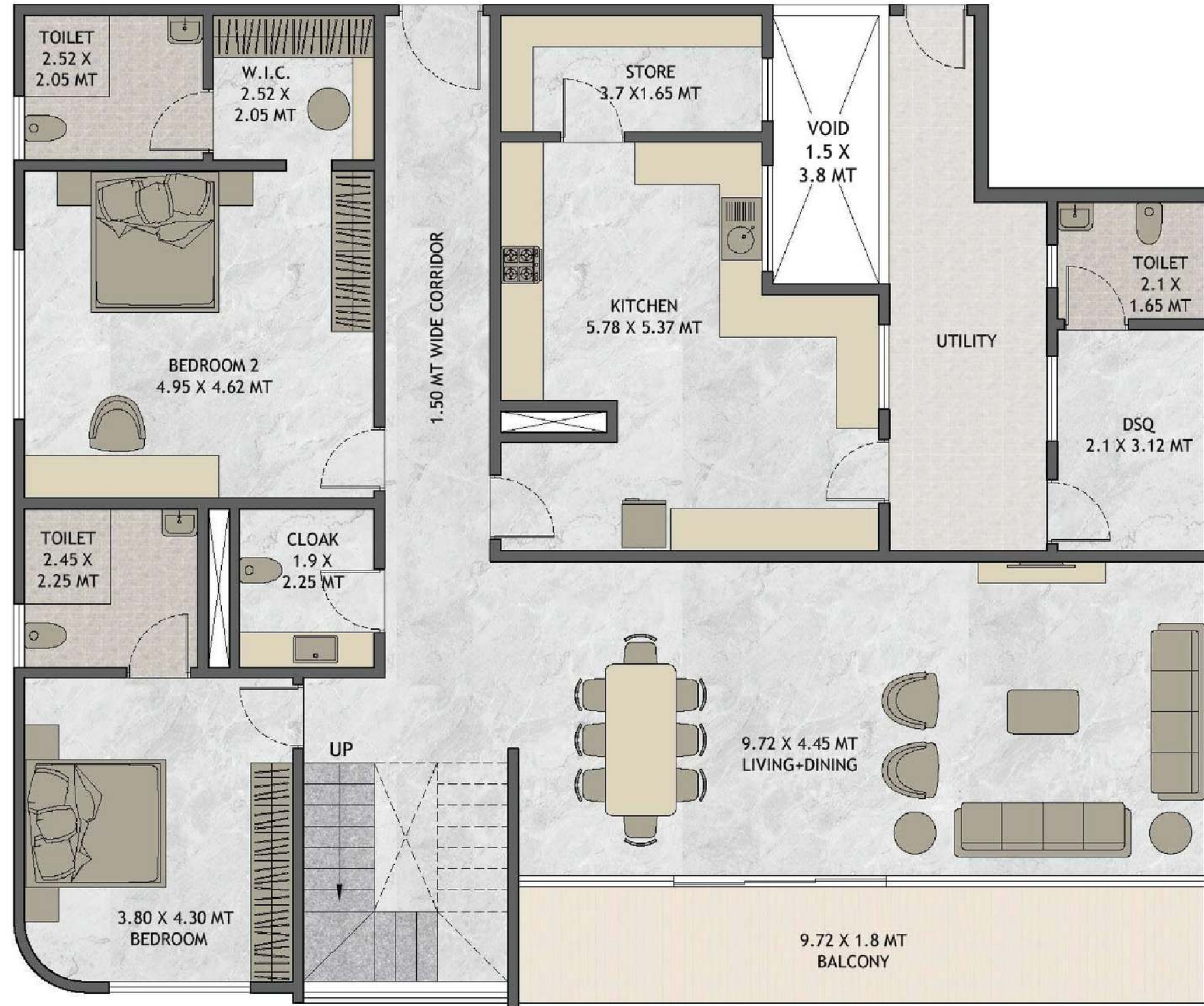


# TOWER B & C - 4 BEDROOM + DSQ (LOWER & UPPER) - 230SQM



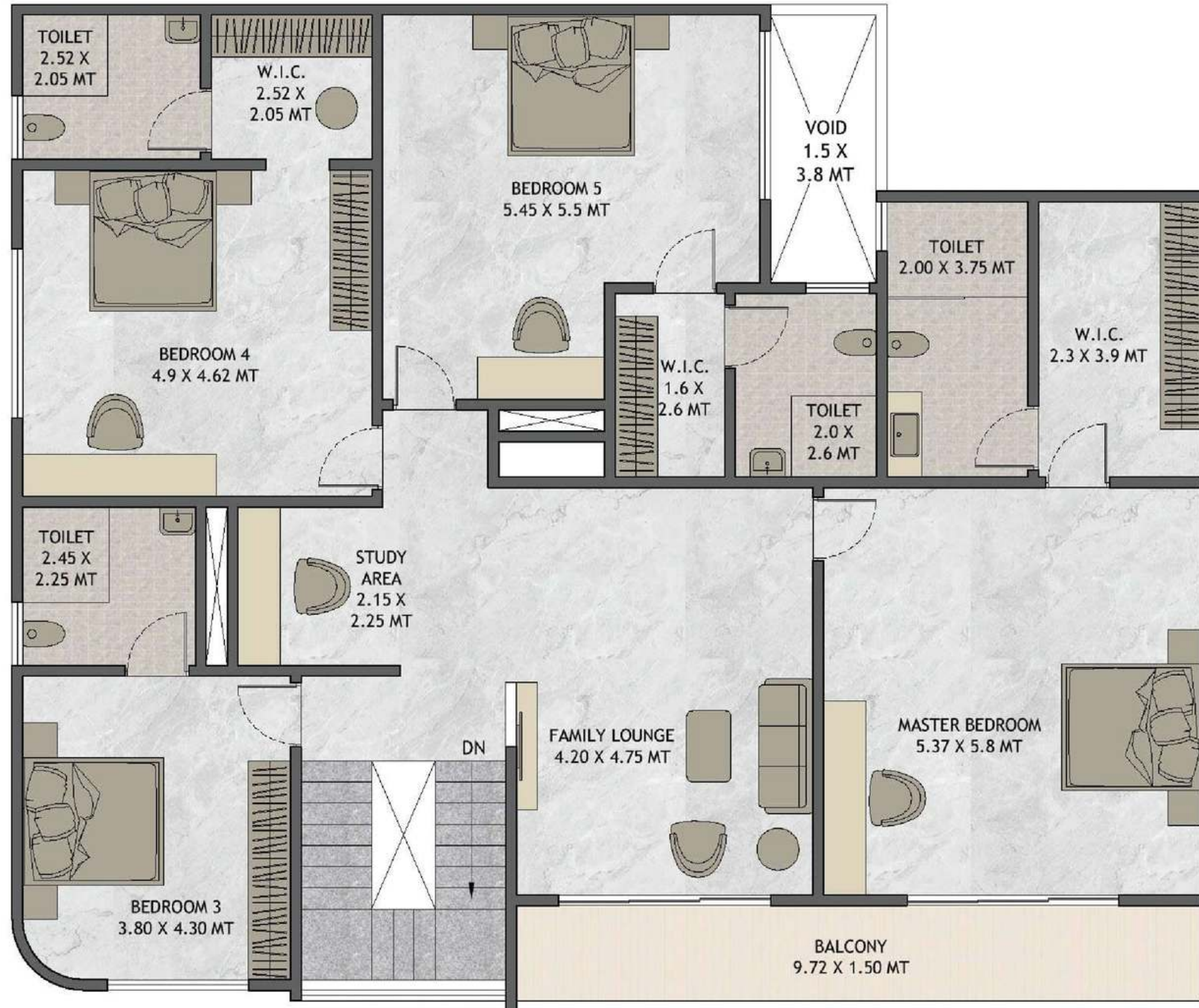


# TOWER B & C - PENTHOUSE - 430SQM (1) - LOWER





# TOWER B & C - PENTHOUSE - 430SQM (2) - MIDDLE



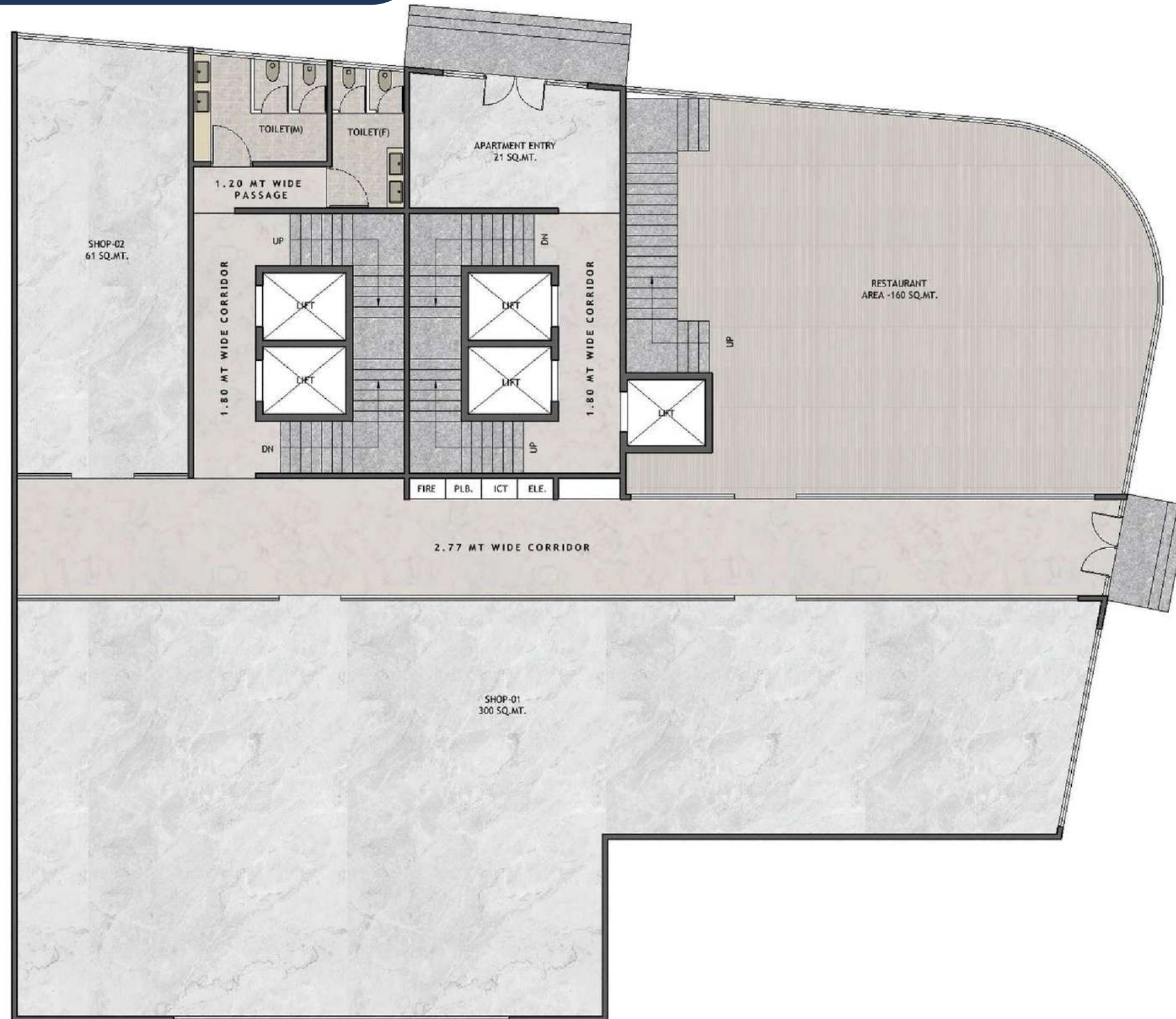


# TOWER B & C - PENTHOUSE - 430SQM (3) - UPPER



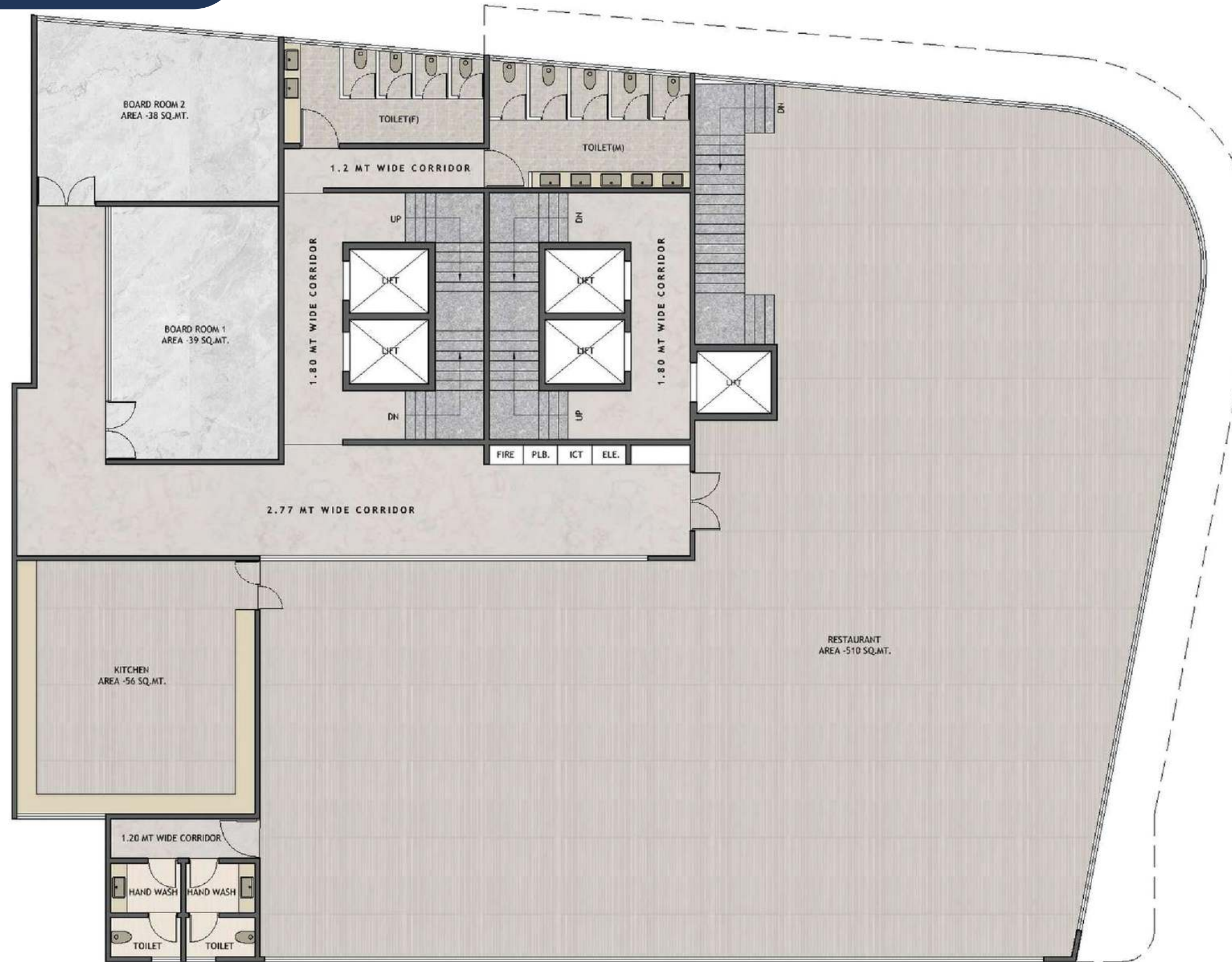


# TOWER A - GROUND FLOOR



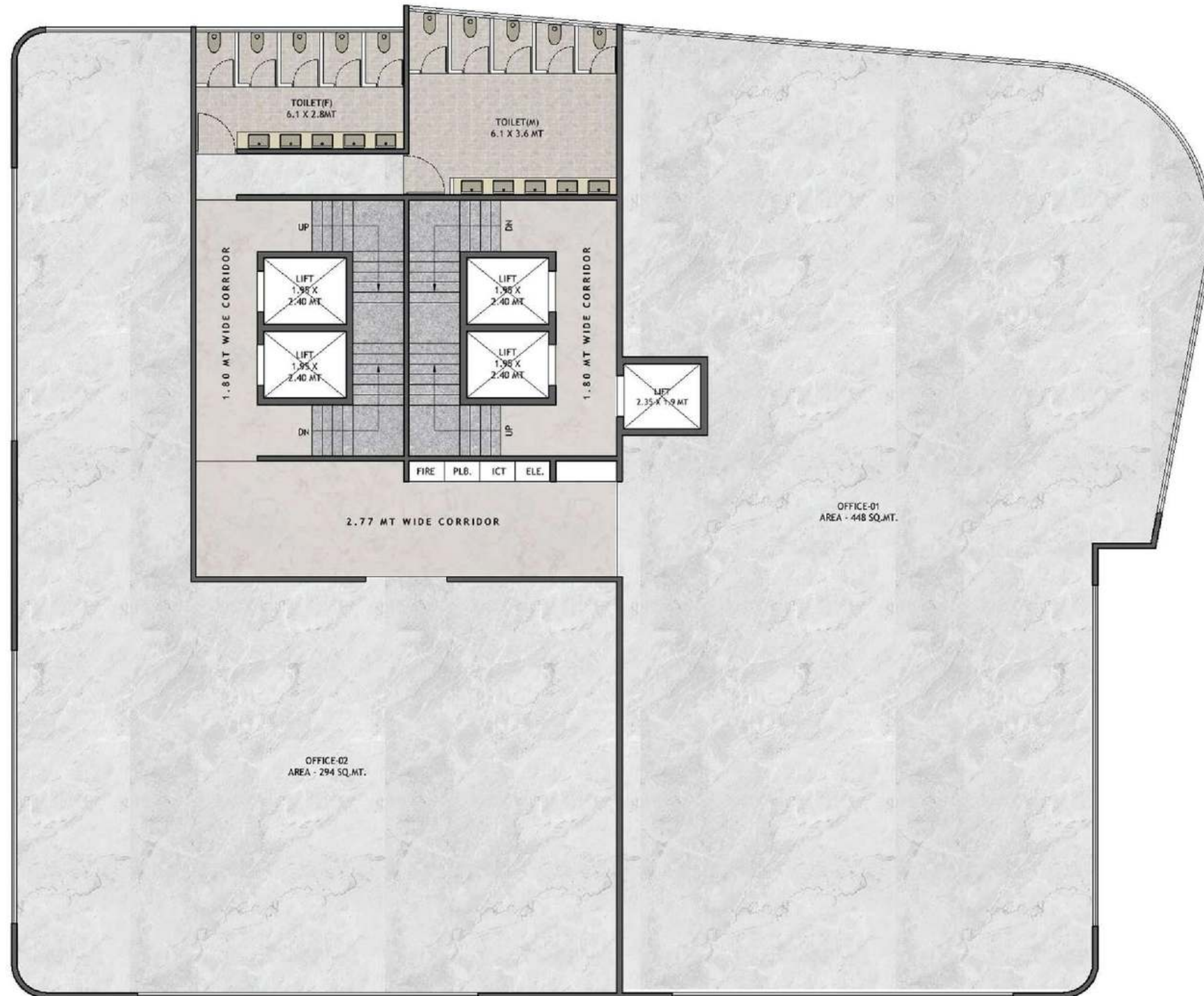


# TOWER A - MEZZANINE





# TOWER A - FLOOR 1-5





**TOWER A - FLOOR PLAN - CONSISTS OF 8 UNITS EACH FLOOR (6-21)**



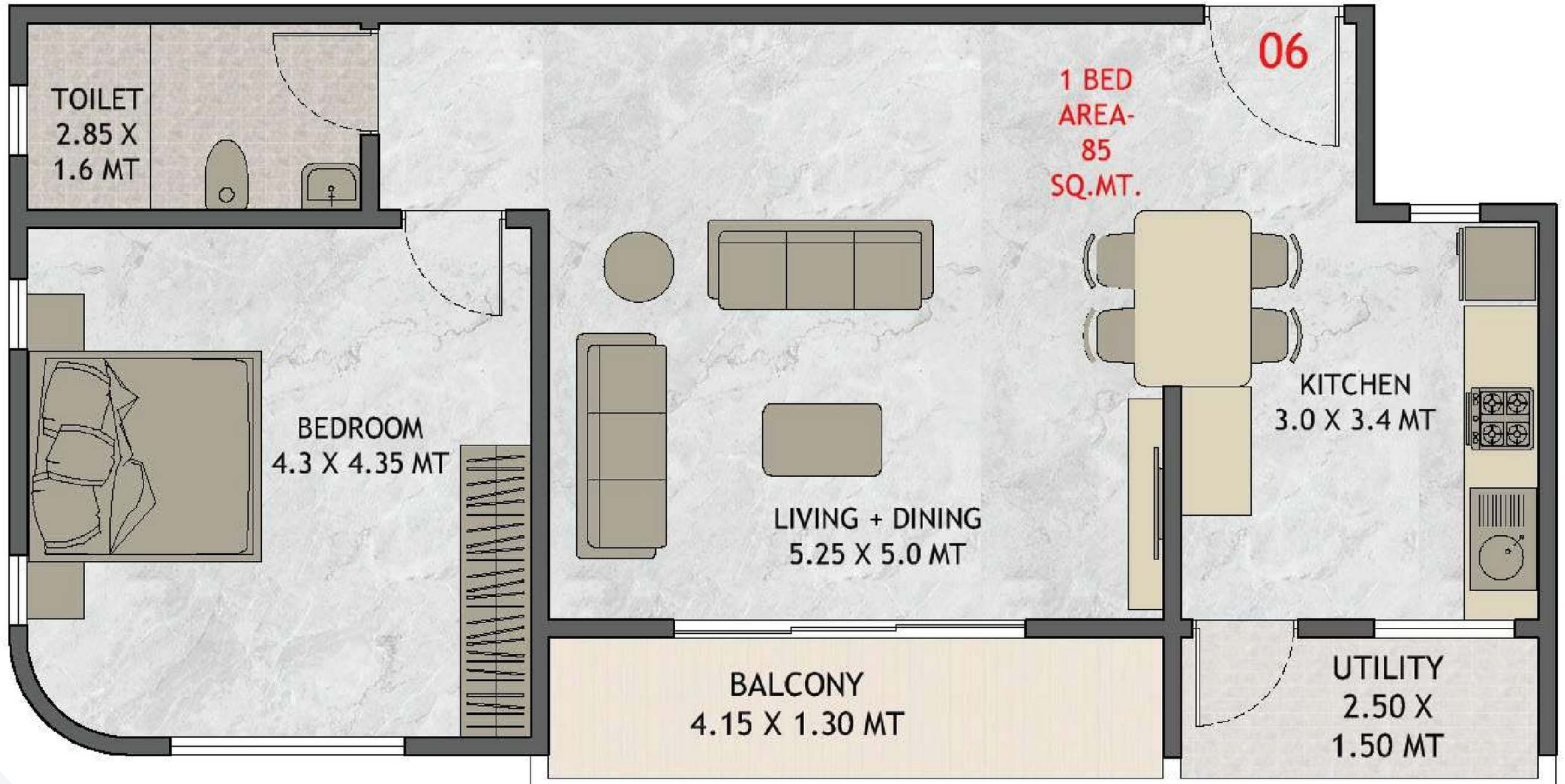


# TOWER A - 2 BEDROOM (125 SQM)





# TOWER A - 1 BEDROOM (85 SQM)





# FEE STRUCTURE

	6 MONTHS	1 YEAR	2 YEARS	3 YEARS
1 BEDROOM	\$ 50,000	\$ 55,000	\$ 60,000	\$ 75,000
2 BEDROOM FURNISHED	\$ 70,000	\$ 75,000	\$ 80,000	\$ 95,000
2 BEDROOM +DSQ	\$ 70,000	\$ 75,000	\$ 80,000	\$ 95,000
4 BEDROOM + DSQ	\$ 135,000	\$ 145,000	\$ 155,000	\$ 175,000
5 BEDROOM + DSQ	\$ 180,000	\$ 190,000	\$ 200,000	\$ 220,000
6 BEDROOM PENTHOUSE	\$ 360,000	\$ 380,000	\$ 400,000	\$ 415,000





# PLAN STRUCTURE

## 6 MONTHS

3 MONTHS INTERVAL

50%  
25%  
25%

## 1 YEAR

4 MONTHS INTERVAL

40%  
20%  
20%  
20%

## 2 YEARS

4 MONTHS INTERVAL

30%  
12%  
12%  
12%  
12%  
12%  
10%







# GET IN TOUCH WITH US

FOR INQUIRIES OR FOLLOW-UPS



## OFFICE ADDRESS

California Square, 3rd Floor,  
Waudu Street, Eastleigh, Nairobi



## PHONE NUMBER

+254 742 222 221



## WEBSITE

[www.naicomhomes.com](http://www.naicomhomes.com)





